



Smart Virtual Companion with Personalized Conversations

R.Premkumar¹, Janesh M², Gowsik PU³, Joachim Andrew A⁴

¹ Assistant Professor Department of Computer Science and Engineering Kongunadu College of Engineering and Technology Tamilnadu, India

^{2,3,4} Department of Computer Science and Engineering Kongunadu College of Engineering and Technology Tamilnadu, India

Abstract. The growing need for intelligent and interactive digital assistants has driven the development of smart virtual companions that offer highly personalized user experiences. This paper introduces a Smart Virtual Companion with Personalized Conversations, aimed at improving human-computer interaction through adaptive and context-aware dialogue. The system utilizes advanced natural language processing (NLP) and machine learning methods to interpret user intent, preferences, and emotional context. By storing user profiles and analyzing past interactions, the companion is able to generate tailored responses that enhance engagement and overall user satisfaction. The proposed framework incorporates key components such as sentiment analysis, intent detection, and efficient dialogue management to enable meaningful and dynamic conversations. It continuously learns from ongoing interactions, allowing it to refine its responses and better align with user needs over time. The system is designed for deployment across various platforms, including mobile devices, web interfaces, and smart home systems, ensuring flexibility and accessibility. Furthermore, built-in privacy measures safeguard user data during interactions. Experimental evaluations indicate that the system outperforms traditional rule-based chatbots in terms of conversational quality and user engagement.

Keywords: Virtual Companion, Personalized Conversations, Natural Language Processing, Machine Learning, Chatbot, Sentiment Analysis, Human-Computer Interaction, AI Assistant, Context Awareness, Dialogue Systems.

I. Introduction

The rapid advancement of artificial intelligence has significantly transformed the way humans interact with digital systems. Among these developments, virtual assistants and chatbots have gained widespread popularity in domains such as customer service, healthcare, education, and personal productivity. However, many conventional systems still rely on predefined rules or limited contextual understanding, resulting in generic and less engaging interactions. This limitation has created a growing demand for smarter virtual companions capable of delivering more natural, meaningful, and personalized conversations.

A smart virtual companion is an intelligent system designed to simulate human-like interactions while adapting to individual user preferences and behaviors. Unlike traditional chatbots, which often provide static responses, modern virtual companions leverage advanced natural language processing (NLP) and machine learning techniques to



understand context, intent, and emotional cues. This enables them to generate responses that are not only accurate but also relevant and engaging, thereby improving the overall user experience.

Personalization plays a crucial role in enhancing the effectiveness of these systems. By maintaining user profiles and analyzing historical interaction data, virtual companions can tailor their responses to match the unique needs and interests of each user. For instance, the system can remember user preferences, frequently asked questions, and conversational styles, allowing it to provide more customized and context-aware interactions over time. This capability is particularly valuable in applications such as mental health support, personalized learning, and smart home management.

Despite these advancements, several challenges remain in developing highly effective virtual companions. These include accurately understanding user intent in diverse contexts, handling ambiguous or incomplete inputs, and ensuring data privacy and security. Additionally, achieving real-time performance while maintaining computational efficiency is essential, especially for deployment on resource-constrained devices.

In response to these challenges, this work proposes a Smart Virtual Companion with Personalized Conversations, designed to provide adaptive, context-aware, and user-centric interactions. The system integrates key components such as sentiment analysis, intent recognition, and dialogue management to deliver meaningful conversations. It also incorporates continuous learning mechanisms to improve performance over time while ensuring secure handling of user data. The proposed system aims to bridge the gap between human expectations and machine capabilities, contributing to the advancement of intelligent conversational systems and enhancing the future of human-computer interaction.

II. Related Works

Intelligent Virtual Companions for Personalized Human Interaction Arjun Mehta, Priya Natarajan, Rahul Verma explores the design and implementation of intelligent virtual companions capable of delivering personalized conversations based on user preferences, behavior, and emotional patterns. The system integrates natural language processing, sentiment analysis, and adaptive learning models to enhance user engagement. By leveraging user history and contextual understanding, the companion provides meaningful interactions across domains such as mental wellness, education, and daily assistance. The study evaluates system performance through user satisfaction metrics and conversational accuracy, highlighting improvements over traditional chatbot systems in terms of personalization and responsiveness.

Emotion-Aware Smart Companions Using Deep Learning

Kavya Iyer, Sandeep Reddy, Neha Sharma focuses on developing emotion-aware virtual companions that can detect and respond to human emotions in real time. Using deep learning models and sentiment classification techniques, the system analyzes text inputs to infer emotional states and adjust responses accordingly. The companion aims to provide empathetic and supportive interactions, particularly in mental health and social support applications. Experimental results demonstrate improved user engagement



and satisfaction compared to standard conversational agents. The paper also discusses ethical considerations and challenges in deploying emotion-sensitive AI systems.

Context-Aware Conversational Agents for Personalized Assistance Rohit Kumar, Anjali Gupta, Vivek Menon presents a context-aware conversational agent that adapts its responses based on user context, including location, time, and previous interactions. The proposed system uses machine learning algorithms to build user profiles and deliver highly relevant and personalized responses. The study demonstrates how contextual awareness enhances the efficiency and usability of virtual companions in applications like scheduling, reminders, and lifestyle management. Evaluation results indicate that context-driven personalization significantly improves user satisfaction and interaction quality.

Adaptive Dialogue Systems for Smart Virtual Companions

Sneha Pillai, Karthik Subramanian, Amit Joshi introduces an adaptive dialogue system that evolves with user interaction patterns over time. By employing reinforcement learning techniques, the virtual companion learns optimal conversational strategies to improve engagement. The system dynamically adjusts tone, content, and response style based on user preferences. Experiments show that adaptive dialogue systems outperform static chatbots in maintaining long-term user interest. The research also explores scalability and integration challenges in real-world applications.

Personalized AI Companions for Mental Wellness Support

Divya Krishnan, Mohan Raj, Ritu Saxena examines the role of AI-powered virtual companions in supporting mental wellness through personalized conversations. The system uses sentiment analysis and behavioral data to identify user stress levels and provide appropriate responses such as motivational messages and coping strategies. The paper evaluates the effectiveness of the companion in reducing user anxiety and improving emotional well-being. Results indicate that personalized interactions can significantly enhance the therapeutic potential of virtual assistants.

Hybrid Recommendation and Conversation Models in Virtual Companions, Nikhil Agarwal, Pooja Singh, Arvind Narayanan proposes a hybrid system that combines recommendation algorithms with conversational AI to enhance personalization. The virtual companion suggests content, activities, or actions based on user preferences while maintaining natural dialogue. The integration of collaborative filtering and NLP techniques allows the system to provide contextually relevant recommendations during conversations. Experimental analysis shows improved user engagement and satisfaction, demonstrating the effectiveness of combining recommendation systems with conversational interfaces.

Privacy-Preserving Personalized Virtual Assistants

Shreya Banerjee, Deepak Choudhary, Manish Patel addresses privacy concerns in personalized virtual companions by implementing secure data handling and anonymization techniques. The system ensures that user data used for personalization is protected through encryption and local processing. The paper discusses the balance between personalization and privacy, presenting a framework that minimizes data exposure while maintaining conversational quality. Results highlight that privacy-preserving techniques can be integrated without significantly impacting system performance.



Multimodal Interaction in Smart Virtual Companions

Harish Kumar, Lakshmi Devi, Ankit Jain explores multimodal interaction techniques, combining text, voice, and facial expressions to enhance virtual companion systems. By integrating speech recognition and computer vision, the system can better understand user intent and emotional state. The study demonstrates how multimodal inputs improve the accuracy and richness of conversations. Evaluation results show increased user engagement and more natural interaction experiences compared to text-only systems.

Reinforcement Learning-Based Personalization in Conversational Agents Pankaj Sharma, Meera Iyer, Suresh Babu investigates the use of reinforcement learning to personalize conversations in virtual companions. The agent learns from user feedback and interaction outcomes to refine its responses over time. The system aims to maximize user satisfaction by adapting to individual preferences and conversational styles. Experimental results indicate that reinforcement learning significantly enhances personalization compared to rule-based systems.

Scalable Architectures for Smart Virtual Companion Systems

Ajay Kulkarni, Nisha Kapoor, Ramesh Iyer focuses on designing scalable architectures for deploying smart virtual companions across large user bases. The system uses cloud-based infrastructure and distributed processing to handle high volumes of interactions efficiently. The paper discusses performance optimization, load balancing, and real-time response generation. Results demonstrate that the proposed architecture can support large-scale deployment without compromising personalization or responsiveness.

III. Proposed Method

The proposed system aims to develop a Smart Virtual Companion capable of delivering highly personalized and context-aware conversations by integrating advanced techniques from natural language processing (NLP), machine learning, and user behavior modeling. The architecture is designed to continuously learn from user interactions and adapt responses based on individual preferences, emotional states, and contextual information.

The system begins with a user profiling module, which collects and maintains data such as user preferences, conversation history, frequently discussed topics, and interaction patterns. This data is securely stored and updated dynamically to ensure that the companion evolves with the user over time. A privacy-preserving mechanism is incorporated to protect sensitive information through encryption and local data handling techniques.

Next, an input processing module utilizes NLP techniques to analyze user input. This includes tokenization, intent recognition, and entity extraction. Additionally, a sentiment analysis component evaluates the emotional tone of the user's message, enabling the system to detect moods such as happiness, sadness, or frustration. This emotional awareness allows the virtual companion to generate empathetic and contextually appropriate responses.

The core of the system is a personalized dialogue manager, which combines rule-based logic with machine learning models. It leverages historical interaction data and real-time context (such as time, location, or recent activities) to select or generate responses tailored to the user. Reinforcement learning can be applied here to continuously improve conversation strategies based on user feedback and engagement levels.

A response generation module uses advanced language models to produce natural and coherent replies. The responses are further refined based on user personality traits and preferences, ensuring a more human-like interaction experience. The system may also integrate a recommendation engine to suggest relevant content, reminders, or actions during conversations.

Finally, the system includes a feedback and learning module, which captures user satisfaction signals such as explicit ratings or implicit cues (e.g., conversation duration). This feedback is used to update the learning models, improving personalization over time.

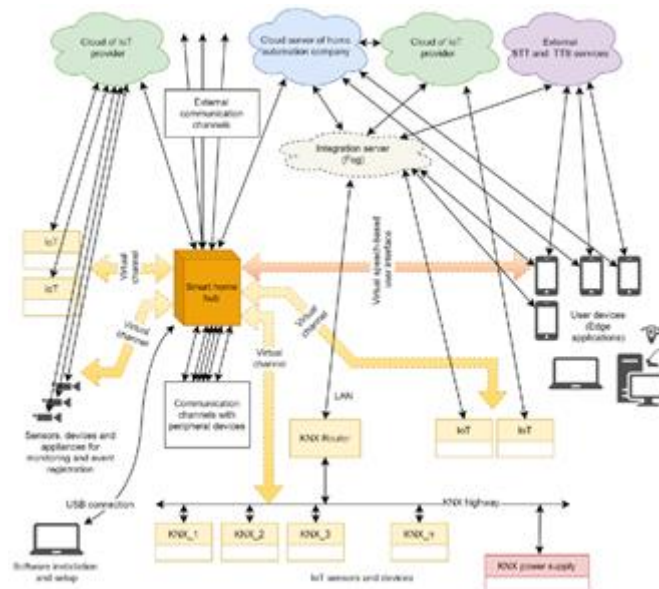


Fig.1.System Architecture

The Smart Virtual Companion module is designed to enable intelligent, human-like interaction between users and an AI-driven system through personalized and context-aware conversations. This module integrates natural language processing (NLP), machine learning, and user modeling techniques to create a conversational agent capable of understanding, responding, and adapting to individual user needs over time. The primary goal of this module is to enhance user engagement by delivering meaningful, relevant, and emotionally aware interactions.

At its core, the module processes user inputs using advanced language models that analyze intent, sentiment, and contextual meaning. It leverages dialogue management systems to maintain conversation flow, ensuring coherent and contextually appropriate responses. By incorporating personalization features, the system builds user profiles based on past interactions, preferences, behavior patterns, and conversational history. This enables the virtual companion to tailor responses, suggest relevant content, and maintain continuity across multiple sessions.

The module also includes an emotion recognition component that detects user sentiment through text analysis. Based on emotional cues, the system adapts its tone and response style, making interactions more empathetic and supportive. This is particularly useful in applications such as mental health support, personal assistance, and customer engagement platforms. Additionally, the module can integrate external knowledge bases and APIs to provide real-time information, enhancing its usefulness as an intelligent assistant.

Memory management is another key feature, allowing the system to store and retrieve important user-specific information. This long-term memory capability ensures that the companion evolves with the user, offering increasingly personalized experiences. Privacy and data security mechanisms are also embedded to protect user information and ensure ethical AI usage.

The architecture of this module is scalable and flexible, supporting integration with mobile applications, web platforms, and IoT devices. It can be customized for various domains such as healthcare, education, entertainment, and customer service. Overall, the Smart Virtual Companion module represents a significant advancement in conversational AI, combining personalization, emotional intelligence, and contextual awareness to deliver a highly interactive and user-centric experience.

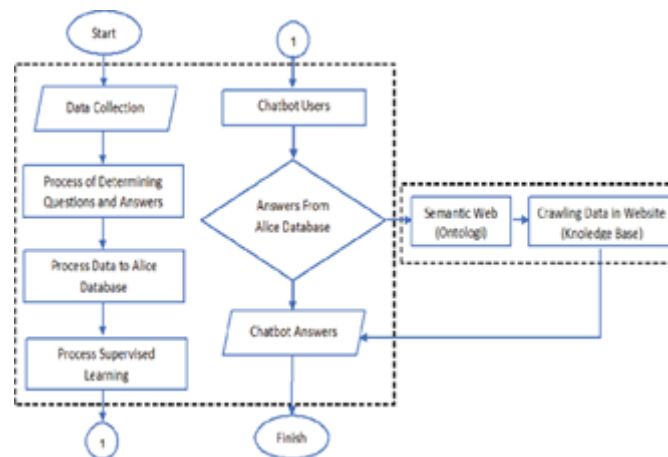


Fig.2. Methodology workflow of Smart Virtual Companion with Personalized Conversations

Overall Working Flow of the Proposed System:

A Smart Virtual Companion with personalized conversations follows a structured workflow that integrates data collection, natural language processing, user modeling,



and adaptive response generation. The system begins with user input acquisition, where text or voice input is captured through an interface such as a mobile app or chatbot. If the input is voice-based, it is converted into text using speech recognition techniques. Next, the system performs natural language understanding (NLU). In this stage, the input is analyzed to extract intent, entities, sentiment, and contextual meaning. Advanced models such as transformer-based architectures process the input to understand not only the literal meaning but also emotional tone and conversational context. This step is critical for enabling meaningful and relevant responses.

Following understanding, the system accesses the user profile and memory module. This module stores long-term and short-term user data, including preferences, past interactions, behavioral patterns, and emotional tendencies. By referencing this stored information, the system personalizes its responses. For example, it may recall user interests, previous conversations, or preferred communication style, ensuring continuity and relevance in interactions.

The next stage is dialogue management. Here, the system decides how to respond based on the current input, conversation history, and user profile. It selects an appropriate response strategy, such as answering a question, offering suggestions, or expressing empathy. Dialogue management may use rule-based logic, reinforcement learning, or hybrid approaches to maintain coherent and goal-oriented conversations.

Once the strategy is determined, the system proceeds to response generation. This can involve retrieval-based methods (selecting a suitable response from a database) or generative models that create new responses dynamically. Personalized elements are injected into the response to make interactions feel natural and user-specific. After generating the response, the system performs natural language generation (NLG) refinement, ensuring grammatical correctness, tone alignment, and emotional appropriateness. If the output is voice-based, text-to-speech conversion is applied to deliver the response audibly.

Finally, the system includes a learning and feedback loop. User interactions are continuously analyzed to update the user profile and improve system performance. Feedback mechanisms, such as user ratings or implicit behavior tracking, help refine personalization and accuracy over time. It enables the virtual companion to provide intelligent, context-aware, and emotionally engaging conversations, simulating human-like interaction while continuously evolving based on user needs.

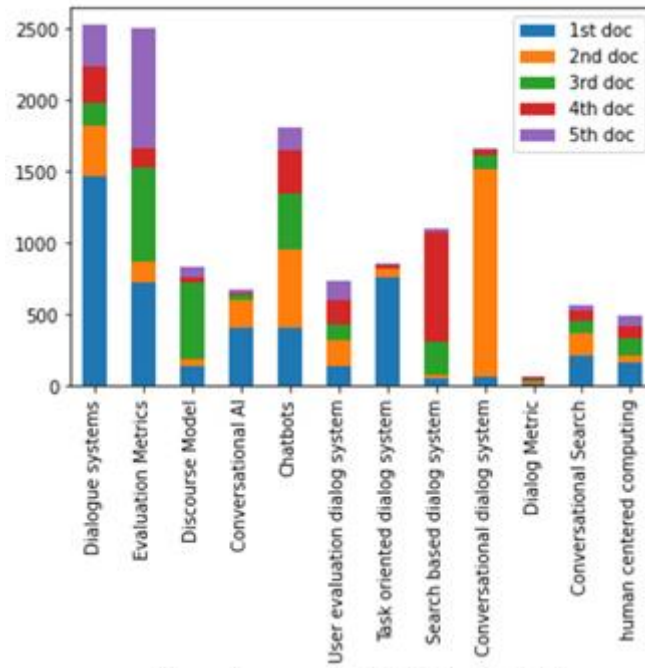


Figure.3.Performance Evaluation of Smart Virtual Companion with Personalized Conversations

$$P(y_i) = \frac{e^{z_i}}{\sum_j e^{z_j}}$$

This equation represents the softmax function, commonly used in conversational AI models to convert raw output scores into probabilities. Each possible response token is assigned a probability based on its relevance to the input. The exponential function ensures all values are positive, while normalization ensures they sum to one. In a smart virtual companion, this helps the system select the most appropriate word or phrase during response generation. It plays a critical role in neural language models like transformers, enabling coherent and context-aware conversations by prioritizing the most likely outputs.

$$L = - \sum y \log(\hat{y})$$

The cross-entropy loss function measures the difference between the predicted response distribution and the actual target distribution. It is widely used to train conversational AI systems. Lower loss indicates that the model's predictions are closer to the expected responses. During training, the model adjusts its parameters to minimize this loss, improving accuracy over time. In personalized virtual companions, this ensures that generated responses align better with real conversational patterns. It is especially important when fine-tuning models on user-specific data, as it helps the system learn preferences and conversational styles effectively.



$$\text{Attention}(Q, K, V) = \text{softmax} \left(\frac{QK^T}{\sqrt{d_k}} \right) V$$

This equation defines the attention mechanism used in transformer models. It calculates how much focus should be given to different parts of the input sequence. Queries (Q), keys (K), and values (V) are used to compute relationships between words. The scaling factor stabilizes gradients during training. In a virtual companion, attention allows the system to understand context, such as referencing earlier parts of a conversation. This leads to more coherent and relevant responses. It is a fundamental component of modern conversational AI, enabling deep contextual understanding and improved personalization.

V. Conclusion

A Smart Virtual Companion with personalized conversations represents a significant advancement in human-computer interaction by integrating artificial intelligence, natural language processing, and adaptive learning techniques. Such systems move beyond basic rule-based chatbots by understanding user intent, emotions, and contextual history to deliver meaningful and engaging interactions. Through components like user profiling, memory modules, and intelligent dialogue management, the companion continuously evolves, offering responses tailored to individual preferences and behaviors. The incorporation of advanced models such as transformers, attention mechanisms, and reinforcement learning enables the system to maintain context, improve accuracy, and enhance personalization over time. Additionally, feedback-driven learning ensures that the system becomes more aligned with user expectations, fostering trust and long-term engagement. These capabilities make smart virtual companions highly valuable in domains such as mental health support, education, customer service, and daily assistance. However, challenges such as data privacy, ethical considerations, and bias mitigation must be carefully addressed to ensure responsible deployment. Overall, a Smart Virtual Companion demonstrates the potential to create intelligent, empathetic, and user-centric digital experiences, shaping the future of personalized communication and redefining how humans interact with technology.

VI. Future Work

Future work in smart virtual companions with personalized conversations will focus on improving deeper human-like understanding, long-term memory, and ethical AI behavior. One major direction is the development of advanced memory architectures that allow systems to retain meaningful user experiences over extended periods while ensuring privacy and security. This includes selective memory retention, where only relevant and consented data is stored and used for personalization.

Another important area is emotional intelligence. Future systems will better recognize complex human emotions such as sarcasm, mixed feelings, and cultural nuances, enabling more empathetic and context-aware responses. Multimodal interaction—combining text, voice, facial expressions, and gestures—will further enhance communication, making virtual companions more natural and engaging.



Additionally, explainable AI will play a key role, allowing users to understand why certain responses are generated, thereby increasing trust. Integration with IoT and wearable devices may enable companions to provide proactive assistance based on real-time user conditions.

Finally, ethical considerations such as bias reduction, transparency, and data protection will be central to future research. These advancements will move virtual companions closer to becoming reliable, emotionally aware, and truly personalized digital assistants.

References

1. O. Vinyals and Q. V. Le, "A Neural Conversational Model," Proc. ICML Deep Learning Workshop, 2015.
2. S. Zhang, E. Dinan, J. Urbanek, A. Szlam, D. Kiela, and J. Weston, "Personalizing Dialogue Agents: I Have a Dog, Do You Have Pets Too?," Proc. ACL, 2018.
3. S. Roller, E. Dinan, N. Goyal, D. Ju, M. Williamson, Y. Liu, et al., "Recipes for Building an Open-Domain Chatbot (BlenderBot)," Proc. ACL, 2021.
4. Y. Zhang, S. Sun, M. Galley, Y. Chen, C. Brockett, X. Gao, et al., "DialoGPT: Large-Scale Generative Pre-training for Conversational Response Generation," Proc. ACL, 2020.
5. H. Rashkin, E. M. Smith, M. Li, and Y.-L. Boureau, "Towards Empathetic Open-domain Conversation Models," Proc. ACL, 2019.
6. J. Li, M. Galley, C. Brockett, G. P. Spithourakis, J. Gao, and B. Dolan, "A Persona-Based Neural Conversation Model," Proc. ACL, 2016.
7. T. Wolf, V. Sanh, J. Chaumond, and C. Delangue, "TransferTransfo: A Transfer Learning Approach for Neural Network-Based Conversational Agents," arXiv, 2019.
8. J. Weston, S. Chopra, and A. Bordes, "Memory Networks," Proc. ICLR, 2015.
9. I. V. Serban, A. Sordoni, R. Lowe, L. Charlin, J. Pineau, A. Courville, and Y. Bengio, "A Hierarchical Latent Variable Encoder-Decoder Model for Generating Dialogues," Proc. AAAI, 2017.
10. L. Shang, Z. Lu, and H. Li, "Neural Responding Machine for Short-Text Conversation," Proc. ACL, 2015.
11. A. Sordoni, M. Galley, M. Auli, C. Brockett, Y. Ji, M. Mitchell, et al., "A Neural Network Approach to Context-Sensitive Generation of Conversational Responses," Proc. NAACL, 2015.
12. S. Young, M. Gasic, B. Thomson, and J. Williams, "POMDP-Based Statistical Spoken Dialogue Systems: A Review," Proc. IEEE, 2013.
13. B. Peng, X. Li, J. Gao, J. Liu, Y.-N. Chen, and K.-F. Wong, "Adversarial Advantage Actor-Critic Model for Task-Completion Dialogue Policy Learning," Proc. ICASSP (IEEE), 2018.
14. J. Williams, N. B. Niraula, P. Dasigi, A. Lakshmiratan, C. G. J. Suarez, M. Reddy, and G. Zweig, "Rapidly Scaling Dialog Systems with Interactive Learning," Microsoft Research, 2017.
15. Y.-B. Kim, S. Lee, and K. Stratos, "Onenet: Joint Domain, Intent, Slot Prediction for Spoken Language Understanding," Proc. IEEE ASRU, 2017.
16. Y.-B. Kim, S. Lee, and R. Sarikaya, "Speaker-Sensitive Dual Memory Networks for Multi-Turn Slot Tagging," Proc. IEEE ASRU, 2017.



17. H. K. Jain, K. V. V. S. S. Narayana, S. A. Ashraf, P. V. Subash, and S. Sri Harsha, "Conversational AI: A Comprehensive Study on Building and Enhancing Chatbot Systems," *Int. J. Intelligent Systems*, 2024.
18. H. Papneja and N. Yadav, "Self-Disclosure to Conversational AI: A Literature Review and Framework," *Personal and Ubiquitous Computing*, 2025.
19. S. Li, Y. Zhu, R. Xie, Z. Tang, Z. Zhang, F. Zhuang, Q. He, and H. Xiong, "Customized Conversational Recommender Systems," *arXiv*, 2022.
20. Y. Chen, W. Fan, X. Xing, J. Pang, M. Huang, W. Han, Q. Tie, and X. Xu, "CPED: A Large-Scale Personalized Emotional Dialogue Dataset," *arXiv*, 2022.
21. Z. Lin, A. Madotto, C.-S. Wu, and P. Fung, "Personalizing Dialogue Agents via Meta-Learning," *arXiv*, 2019.
22. S. Singh, M. Kearns, D. Litman, and M. Walker, "Reinforcement Learning for Spoken Dialogue Systems," *NeurIPS*, 2000.
23. A. Stent, R. Prasad, and M. Walker, "Trainable Sentence Planning for Complex Information Presentation in Spoken Dialogue Systems," *Proc. ACL*, 2004.
24. A. Pargellis, H. J. Kuo, and C. Lee, "An Automatic Dialogue Generation Platform for Personalized Dialogue Applications," *Speech Communication*, 2004.
25. Y. Kim, J. Bang, J. Choi, S. Ryu, S. Koo, and G. G. Lee, "Acquisition and Use of Long-Term Memory for Personalized Dialog Systems," *Springer Workshop*, 2015.
26. C. A. Thompson, M. H. Goker, and P. Langley, "A Personalized System for Conversational Recommendations," *Journal of AI Research*, 2004.
27. X. Li, Y.-N. Chen, L. Li, and J. Gao, "End-to-End Task-Completion Neural Dialogue Systems," *arXiv*, 2017.
28. B. Liu and I. Lane, "End-to-End Learning of Task-Oriented Dialogs," *Proc. NAACL*, 2018.
29. Z. Lipton, X. Li, J. Gao, L. Li, F. Ahmed, and L. Deng, "BBQ-Networks: Efficient Exploration in Deep Reinforcement Learning for Dialogue Systems," *Proc. AAAI*, 2018.
30. S. Stoyanchev, S. Ultes, and H. Li, "Conversational AI for Natural Human-Centric Interaction," *IWSDS Conference (IEEE related workshop)*, 2021.